

WILLOUGHBY PLAT NO. 8

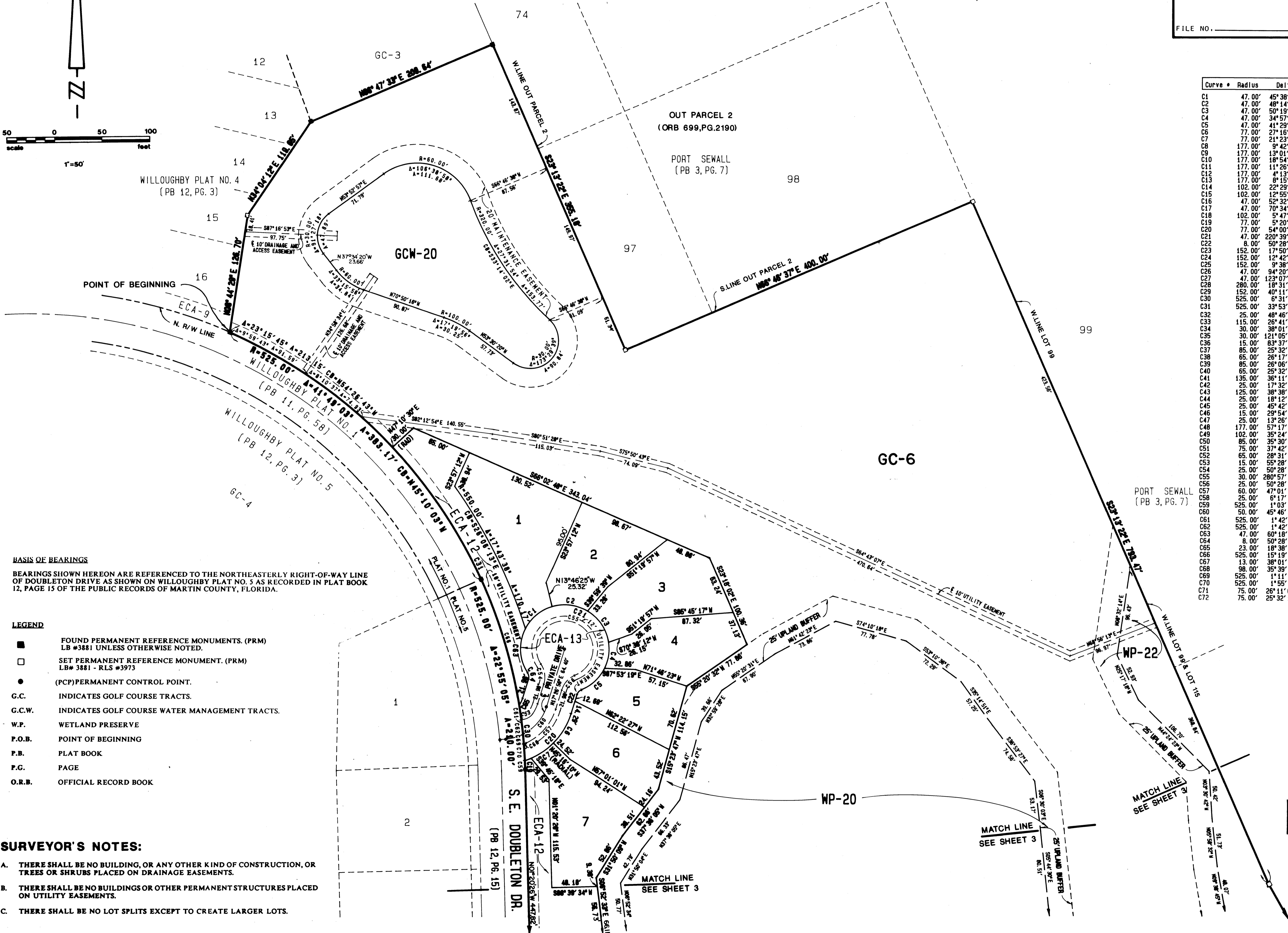
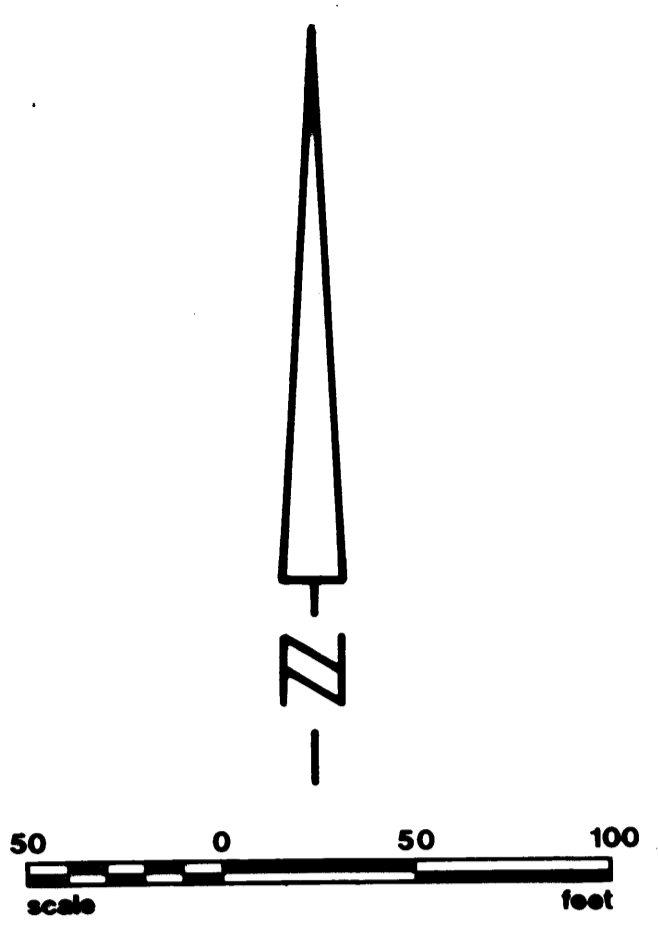
BEING A TRACT OF LAND LYING IN THE HANSON GRANT SITUATED IN MARTIN COUNTY, FLORIDA.

I, MARSHA STILLER, CLERK OF THE CIRCUIT COURT OF MARTIN COUNTY, FLORIDA, HEREBY CERTIFY THAT THIS PLAT WAS FILED FOR RECORD IN PLAT BOOK _____, PAGE _____, MARTIN COUNTY, FLORIDA, PUBLIC RECORDS, THIS DAY OF _____, 1992

MARSHA STILLER, CLERK
CIRCUIT COURT
MARTIN COUNTY, FLORIDA

BY: _____
DEPUTY CLERK

FILE NO. _____



BASIS OF BEARINGS
BEARINGS SHOWN HEREON ARE REFERENCED TO THE NORTHEASTERLY RIGHT-OF-WAY LINE OF DOUBLETON DRIVE AS SHOWN ON WILLOUGHBY PLAT NO. 5 AS RECORDED IN PLAT BOOK 12, PAGE 15 OF THE PUBLIC RECORDS OF MARTIN COUNTY, FLORIDA.

- LEGEND**
- FOUND PERMANENT REFERENCE MONUMENTS. (PRM) LB #3881 UNLESS OTHERWISE NOTED.
 - SET PERMANENT REFERENCE MONUMENT. (PRM) LB# 3881 - RLS #3973
 - (PCP) PERMANENT CONTROL POINT.
 - G.C. INDICATES GOLF COURSE TRACTS.
 - G.C.W. INDICATES GOLF COURSE WATER MANAGEMENT TRACTS.
 - W.P. WETLAND PRESERVE
 - P.O.B. POINT OF BEGINNING
 - P.B. PLAT BOOK
 - P.G. PAGE
 - O.R.B. OFFICIAL RECORD BOOK

- SURVEYOR'S NOTES:**
- A. THERE SHALL BE NO BUILDING, OR ANY OTHER KIND OF CONSTRUCTION, OR TREES OR SHRUBS PLACED ON DRAINAGE EASEMENTS.
 - B. THERE SHALL BE NO BUILDINGS OR OTHER PERMANENT STRUCTURES PLACED ON UTILITY EASEMENTS.
 - C. THERE SHALL BE NO LOT SPLITS EXCEPT TO CREATE LARGER LOTS.

Curve	Radius	Delta	Length	Tangent	Chord/Brg
C1	47.00'	45°38'57"	37.45'	19.78'	36.46' N50°05'56"E
C2	47.00'	48°14'14"	39.57'	21.04'	38.41' N82°57'26"W
C3	47.00'	50°19'14"	41.28'	22.08'	39.96' S33°40'42"E
C4	47.00'	34°57'00"	28.67'	14.80'	28.23' S08°57'23"W
C5	47.00'	41°29'46"	34.04'	17.80'	33.30' S47°10'46"W
C6	77.00'	27°16'54"	28.75'	14.54'	18.63' S51°05'22"W
C7	77.00'	21°23'28"	28.75'	14.54'	28.58' S55°25'34"W
C8	177.00'	9°42'36"	30.00'	15.03'	29.96' S71°11'58"E
C9	177.00'	13°01'33"	40.24'	20.21'	40.15' S59°49'53"E
C10	177.00'	18°54'20"	58.40'	29.47'	58.14' S43°51'57"E
C11	177.00'	11°26'16"	35.33'	17.73'	35.28' S28°41'39"E
C12	177.00'	4°13'10"	13.04'	6.52'	13.03' S20°51'56"E
C13	177.00'	8°15'20"	25.50'	12.77'	25.48' S80°10'56"E
C14	102.00'	22°23'37"	36.00'	20.28'	39.78' N07°30'32"W
C15	102.00'	12°55'10"	23.00'	11.55'	22.98' S10°11'50"W
C16	47.00'	52°32'44"	43.10'	23.20'	41.61' N26°32'00"W
C17	47.00'	70°34'23"	57.89'	33.26'	54.30' N35°01'32"E
C18	102.00'	5°47'37"	10.31'	5.16'	10.31' N19°33'13"E
C19	77.00'	38°20'13"	7.17'	3.59'	7.17' N68°47'24"E
C20	77.00'	54°00'35"	72.58'	39.24'	69.93' S44°27'13"W
C21	47.00'	220°38'12"	181.00'	0.00'	88.15' S42°23'55"E
C22	8.00'	50°28'44"	7.05'	3.77'	6.82' S42°41'17"W
C23	152.00'	17°50'05"	47.31'	23.85'	47.12' S06°25'17"E
C24	152.00'	12°42'24"	33.72'	16.33'	33.65' S08°51'05"W
C25	152.00'	9°38'40"	25.59'	12.82'	25.56' S20°01'48"W
C26	47.00'	94°20'56"	77.39'	50.71'	68.94' S62°30'47"E
C27	47.00'	123°07'07"	100.99'	86.78'	82.66' N08°45'10"E
C28	280.00'	18°31'20"	90.52'	45.66'	90.12' S48°44'10"E
C29	152.00'	40°11'29"	106.62'	55.61'	104.45' S04°45'23"W
C30	525.00'	6°31'27"	59.78'	29.92'	59.75' S05°39'56"E
C31	525.00'	33°53'10"	310.50'	159.94'	305.99' S25°52'14"E
C32	25.00'	48°46'42"	21.28'	11.33'	20.65' N36°17'54"E
C33	115.00'	26°41'29"	53.57'	27.28'	53.09' S01°26'09"E
C34	30.00'	38°01'29"	19.91'	10.34'	19.55' S33°47'38"E
C35	30.00'	121°05'17"	63.40'	53.12'	52.24' N07°44'15"E
C36	15.00'	83°37'14"	21.89'	13.42'	20.00' S26°28'16"W
C37	85.00'	25°32'18"	37.89'	19.26'	37.57' N02°34'09"W
C38	65.00'	26°17'02"	29.82'	15.18'	29.56' S02°56'32"E
C39	85.00'	26°06'31"	38.73'	19.71'	38.40' N02°51'16"W
C40	65.00'	25°32'18"	28.97'	14.73'	28.73' S02°34'09"E
C41	135.00'	36°11'57"	85.29'	44.12'	83.88' S02°45'37"W
C42	25.00'	17°32'36"	7.65'	3.86'	7.62' S12°05'18"W
C43	125.00'	38°38'10"	84.29'	43.82'	82.70' S03°58'44"W
C44	25.00'	18°12'04"	7.94'	4.00'	7.91' S71°45'20"E
C45	25.00'	45°42'24"	19.94'	10.54'	19.42' N82°49'38"E
C46	15.00'	29°54'15"	7.83'	4.01'	7.74' S24°42'45"W
C47	25.00'	13°26'22"	5.86'	2.95'	5.85' S10°02'12"W
C48	177.00'	57°17'55"	177.01'	96.70'	169.72' S47°24'18"E
C49	102.00'	35°24'47"	63.04'	32.57'	62.05' S01°02'57"E
C50	85.00'	35°30'45"	52.68'	27.22'	51.84' S00°59'58"E
C51	75.00'	37°42'57"	49.37'	25.62'	48.48' S00°06'06"W
C52	65.00'	28°31'00"	32.35'	16.52'	32.02' N04°29'51"W
C53	15.00'	55°28'17"	14.52'	7.89'	13.96' N61°53'39"E
C54	25.00'	50°28'44"	22.03'	11.79'	21.32' S07°47'24"E
C55	30.00'	280°57'27"	147.11'	0.00'	38.18' S72°33'03"E
C56	25.00'	50°28'44"	22.03'	11.79'	21.32' S42°41'17"W
C57	60.00'	47°01'14"	49.24'	26.10'	47.87' S40°57'32"W
C58	25.00'	6°17'13"	2.74'	1.37'	2.74' S61°19'33"W
C59	525.00'	1°03'48"	5.74'	4.87'	5.74' N01°52'19"W
C60	50.00'	45°46'37"	39.95'	21.11'	38.89' S40°20'14"W
C61	525.00'	1°42'27"	15.64'	7.82'	15.64' S08°04'26"E
C62	525.00'	1°42'48"	15.70'	7.85'	15.70' S06°21'48"E
C63	47.00'	60°18'16"	49.47'	27.30'	47.22' S02°52'38"E
C64	8.00'	50°28'44"	7.05'	3.77'	6.82' S42°41'17"W
C65	23.00'	18°38'24"	7.48'	3.77'	7.45' N26°46'08"E
C66	525.00'	15°19'51"	140.48'	70.66'	140.06' S16°35'35"E
C67	13.00'	38°01'29"	8.63'	4.48'	8.47' S33°47'38"E
C68	58.00'	35°39'12"	60.98'	31.51'	60.00' S03°02'40"W
C69	525.00'	1°11'06"	10.86'	5.43'	10.86' S04°54'51"E
C70	525.00'	1°55'06"	17.58'	8.79'	17.58' S03°21'45"E
C71	75.00'	26°11'04"	34.28'	17.44'	33.98' S02°53'35"E
C72	75.00'	25°32'18"	33.43'	17.00'	33.15' S02°34'11"E

Hutcheon Engineers
a division of Kinley-Horn and Associates, Inc.
11 East Osceola Street, Stuart, Florida 34984-2114

JANUARY 1992

SHEET 2 OF 4